



KENYA PROPERTY DEVELOPERS ASSOCIATION (KPDA)

REPORT ON THE CONSTRUCTION HEALTH AND SAFETY BREAKFAST FORUM HELD ON TUESDAY 21ST FEBRUARY 2017 AT THE CROWNE PLAZA HOTEL, NAIROBI

THEME: 'OCCUPATIONAL SAFETY AND HEALTH SAFETY STANDARDS IN THE KENYAN CONSTRUCTION INDUSTRY'



On Tuesday, 21st February 2017, KPDA held its KPDA Construction Health and Safety Breakfast Forum at the Crowne Plaza Hotel. The event whose theme centred on occupational safety and health in the Kenyan construction industry was attended by fifty six (56) participants.

The forum had presentations from the following speakers:

1. Dr. Torooti Mwirigi - Director, AskaDoc
2. Mr. Samuel Thuita - Actg. Director, Directorate for Occupational Health and Safety Services (DOSHS)
3. Justus M. Kathenge - Director - Planning, Compliance and Enforcement, Nairobi City County Government
4. Arch. Stephen Mwilu - Manager -Regional Offices, National Construction Authority (NCA)

STATISTICS ON OSH

The International Labour Organization (ILO), World Health Organization (WHO) and the United Nations (UN) estimates that annually around the world there are:

- ♣ 270 million occupational accidents
- ♣ 160 million cases of occupational disease
- ♣ Over 2 million workers die each year as the result of accidents or contracting an occupational illness

FOR EVERY 2 PEOPLE EXAMINED, THERE WAS A MEDICAL CONDITION*

15%

High Blood Pressure



30%

Hypertension



08%

Border Line



47%
of people have
medical conditions
in 2013-2015

33%

Overweight

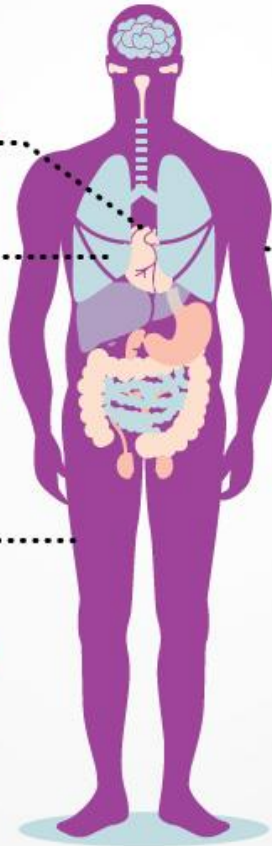
05%

Obese

19% of The Kenyan
population
Overweight



9%
is Obese



*Out of 4000 Medical Examination conducted 2013-2015

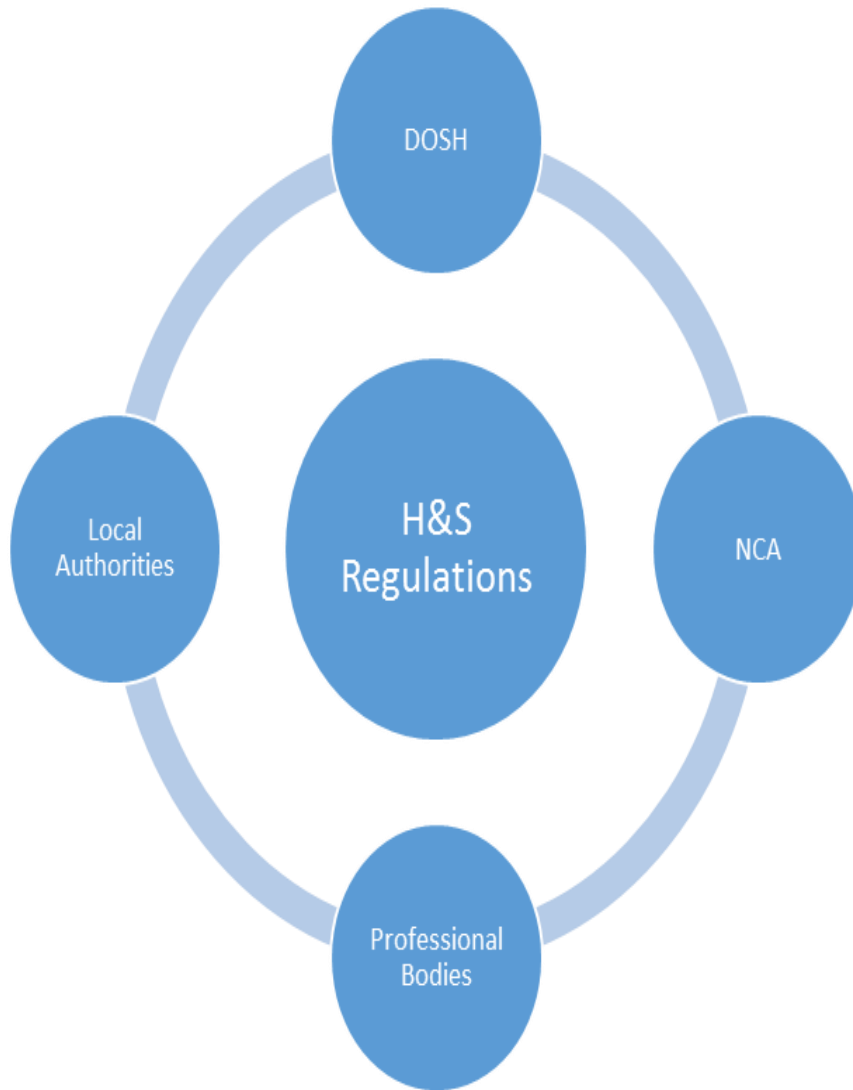
Powered by



OSH CHALLENGES IN CONSTRUCTION IN KENYA

1. Complexity of hazards
2. Growth in construction in Kenya
3. Poor safety practices
4. Inadequate understanding of OSH

5. Regulation of health and safety in construction



SOLUTIONS TO CHALLENGES

- ❖ Dialogue between stakeholders to harmonize the management of OSH
- ❖ Sensitization of stakeholders on OSH

CONSTRUCTION OCCUPATIONAL SAFETY AND HEALTH LEGAL REQUIREMENTS

Compliance is required for the following pieces of legislation:

1. The Occupational Safety and Health Act No. 15 of 2007
2. The Factories, Building Operations and Works of Engineering Operations Rules L.N. No. 40 of 1984
3. The Work Injury Benefits Act 2007 (WIBA)
4. Nairobi City County Government Rules and Regulations on Occupational Health and Safety
5. National Construction Authority Act 2011
6. Environmental Management and Co-ordination Act 1999

BROAD CATEGORIES OF CONSTRUCTION PROCESS

1. Preparatory phase (approvals - presented earlier)
2. Site preparation
3. Actual construction

CONSULTANTS' ROLE ON OCCUPATIONAL SAFETY & HEALTH

Safety begins with engaging rightful consultants at the construction sites during the whole project cycle.

- ♣ Consultant architect to ensure that designs are implemented as per the approvals
- ♣ Consultant structural engineer to supervise design works as approved
- ♣ Plumbing works, electrical works & mechanical works to be done according to consultant experts

NCCG OCCUPATIONAL HEALTH & SAFETY COMPLIANCE

Summary of NCCG Licenses, Fees & Permits for Commercial Projects

1. Change of use (Kshs. 41, 000 - 121, 000)
2. Building plans & structural designs approvals
3. Hoarding license (Kshs. 6, 000 - 10,000 p/m & Kshs. 300/m per month built-up area)
4. Excavation license (Kshs. 20, 000) & cutting-away spoil & depositing on approved site (Kshs. 20, 000)
5. Trees' clearance (Kshs. 1, 000 depending on girth)
6. Contractor's trade license (Kshs. 70, 000 large; 30, 000 medium & 15, 000 small)
7. Site toilet (Kshs. 10, 000)
8. Site office (min. Kshs. 10, 000 depending on area)
9. Fire clearance where fuel is stored (Kshs. 6, 000)
10. Site where food is stored (Kshs. 1, 000 food handlers & 5, 000 premises license)
11. Construction site board (Kshs. 35, 000)

CONCLUSION

It is our Moral, Social, Financial and Legal obligation to manage OSH in our work sites. Existing challenges in the growing real estate sector can be met through collaboration between involved stakeholders.

CONTACTS OF SPEAKERS

1. Dr. Torooti Mwirigi - Director, AskaDoc
0722 857 210, torootimwirigi@askadoc.co.ke
2. Mr. Samuel Thuita - Actg. Director, Directorate for Occupational Health and Safety Services (DOSHS)
0722 655 305, samueltuita@yahoo.com
3. Justus M. Kathenge - Director - Planning, Compliance and Enforcement, Nairobi City County Government
0720 854 578, samueltuita@yahoo.com
4. Arch. Stephen Mwilu - Manager -Regional Offices, National Construction Authority (NCA)
0722 684 767, smwilu@nca.go.ke

Join the KPDA Family!

Kindly contact the Membership Relations Officer, Liz Kayaki through the telephone numbers 0737 530 290 or 0705 277 787 or by email e.kayaki@kpda.or.ke.

Kenya Property Developers Association
Fatima Flats, Suite 4 B
Marcus Garvey Road off Argwings Kodhek Road, Kilimani Area
P. O. Box 76154 - 00508
NAIROBI, KENYA
Telephone: +254 737 530 290/0705 277 787
Email: admin@kpda.or.ke or e.kayaki@kpda.o.ke
Website: www.kpda.or.ke